

Knitting Instructions:

— **7 FREE** —

knitting
patterns

for knitting
accessories



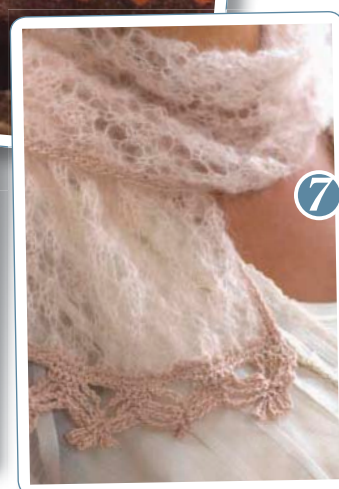
knittingdaily

Knitting Instructions:

7 FREE

knitting patterns
for knitting accessories

—



1 CABLED LEGGINGS
Ann Budd

2 CABLE RIB SOCKS
Kathleen Cubley

3 BOOM BAG
Kate Kuckro

4 SNOWBALL HAT
Katie Himmelberg

5 CRUMPET BERET
Maura Kirk ©Fairmount Fibers

6 SPECTRUM SCARF
Eunny Jang

7 LACE SCARF
Lene Holme Samsøe

Knitting Instructions:

7 FREE

knitting patterns for knitting accessories

WELCOME to our new free eBook *Knitting Instructions: 7 Free Knitting Patterns for Knitting Accessories*.

We've given you patterns for socks, baby lace projects, easy projects, men's designs, and cardigans, and now we're providing you with seven must-have accessory patterns!

Our **Cabled Leggings** by **Ann Budd** aren't your standard 80s legwarmers. These stylish beauties are perfect for wearing with tights, a skirt, and some funky shoes.

I developed my **Cable Rib Socks** for the Sock Club at my LYS. The yarn is a fun, self-stripping wool-nylon blend that really catches the eye. This pattern is easy and quick to knit.

Messenger bags are all the rage, and for good reason—they're big enough to hold whatever you might need and they're easy to carry. The **Boom Bag** by **Kate Kuckro** is super cool and fun to make—you get to take the scissors to your felted bag!

We all need a cute hat in our accessory wardrobe, and **Katie Himmelberg's Snowball Hat** fits the bill. You can add the cute giant pom pom or leave it off for more of a beanie look.

The **Crumpet Beret** by **Maura Kirk** and **Fairmount Fibers** is one-skein wonder that's also interesting to knit. This is the perfect gift accessory.

If you're looking for an easy project, you've found it with the **Spectrum Scarf** by **Eunny Jang**. With just a one-row lace repeat, you can whip out this scarf while watching your favorite movies.

The **Lace Scarf** by **Lene Home Samsøe** is the perfect combo of knit and crochet. This project is made up of an interesting combination of mohair for the scarf portion and a linen blend for the edging. This is an heirloom-quality scarf.

I hope this collection of free patterns will keep you busy—I like to have an accessory project on the needles all the time so I can take a break from sweater knitting sometimes, and these small projects will help you practice your skills on a small scale, perhaps challenging yourself a little here and there! And in today's economy, we could all use a couple of one- or two-skein projects, right? You can "shop your stash" to find yarn for many of these patterns.

Have fun with these projects!

Cheers,

Kathleen

Kathleen Cubley
Editor, *KnittingDaily.com*

1 CABLED LEGGINGS
Ann Budd.....PAGE 2

2 CABLE RIB SOCKS
Kathleen Cubley.....PAGE 4

3 BOOM BAG
Kate Kuckro.....PAGE 6

4 SNOWBALL HAT
Katie Himmelberg.....PAGE 9

5 CRUMPET BERET
Maura Kirk ©Fairmount Fibers.....PAGE 11

6 SPECTRUM SCARF
Eunny Jang.....PAGE 14

7 LACE SCARF
Lene Holme Samsøe.....PAGE 16

STITCH GLOSSARY.....PAGE 18



KNITTING INSTRUCTIONS:
7 FREE KNITTING PATTERNS
FOR KNITTING ACCESSORIES

A Knitting Daily eBook edited by
Kathleen Cubley

EDITORIAL STAFF
EDITOR, KNITTING DAILY Kathleen Cubley
CONTRIBUTING EDITOR, KNITTING DAILY Sandi Wiseheart

CREATIVE SERVICES
DESIGNER Tammy Beard
PHOTOGRAPHY Chris Hartlove (unless otherwise noted)
ILLUSTRATION Gayle Ford

Projects and information are for inspiration and personal use only. *Interweave Knits* and *Knitting Daily* do not recommend, approve, or endorse any of the advertisers, products, services, or views advertised in this publication. Nor does *Knits* or *Knitting Daily* evaluate the advertisers' claims in any way. You should, therefore, use your own judgment in evaluating the advertisers, products, services, and views advertised in *Knits* or *Knitting Daily*.

Cabled Leggings

design by Ann Budd

Originally published on *Knitting Daily*, Fall 2008



Ivy Bigelow

When this wonderful, supple merino became available in a worsted weight, Ann just knew that she had to make something with it. Working in a chilly office, she needed something to warm stockinged legs—kismet! Subtle increases give just enough ease, and the assurance of sunshiny golden cables under the desk is enough to fortify against even the dreariest late-winter day.

FINISHED SIZE: About 7½" (19 cm) circumference at bottom, 12" (30.5 cm) circumference at top, and about 18" (45.5 cm) long.

YARN: CYCA #4 medium. Shelridge Farm Soft Touch W4 (100% wool; 200 yd [182 m]/100 g): butterscotch, 2 skeins. (Shelridge Farm is located at R.R. #2 Ariss, ON, Canada N0B 1B0.)

NEEDLES: Size 8 (5 mm): set of 4 double-pointed (dpn).

NOTIONS: Marker (m); cable needle (cn); tapestry needle.

GAUGE: 5 sts and 7 rows = 1" (2.5 cm) in St st.

SKILL LEVEL: Intermediate.

CABLE RIB PATTERN

Rnds 1, 2, and 3: *K6, [p1, k1] 2 times, p1; rep from *.

Rnd 4: *Place 3 sts onto cn and hold in front, k3, k3 from cn, [p1, k1] 2 times, p1; rep from *.

Rnds 5, 6, 7, and 8: Rep Rnd 1.

Rep Rnds 1–8 for pattern.

Knitting Instructions: **7 FREE Knitting Patterns for Knitting Accessories**

©Interweave | Not to be reprinted | All rights reserved | www.knittingdaily.com

LEGGING

CO 55 sts. Arrange sts on 3 dpn, place marker (pm) and join, being careful not to twist sts. Work cable rib patt 4 times—piece should measure about 3½" (9 cm) from beg. Inc on next rnd (Rnd 1) as foll: *K6, M1, [p1, k1] 2 times, p1, M1; rep from *—65 sts. Working new sts in rev St st (purl every rnd), cont in patt as established until piece measures about 8" (20.5 cm) from beg, ending with Rnd 8 of patt. Inc on next rnd (Rnd 1 of patt) as foll: *K6, p1, M1, [p1, k1] 2 times, p1, M1, p1; rep from *—75 sts. Working new sts in St st (knit every rnd), cont in patt as established until piece measures about 14" (35.5 cm)

from beg, ending with Rnd 8 of patt. Inc on next rnd (Rnd 1 of patt) as foll: *k6, M1, [p1, k1] 4 times, p1, M1; rep from *—85 sts. Working new sts in rev St st (purl every rnd), cont in patt as established until piece measures about 18" (45.5 cm) from beg, ending with Rnd 6 of patt. BO all sts loosely in patt. Weave in loose ends. ❄

ANN BUDD is a book editor and the former senior editor of *Interweave Knits* magazine. She is the author of *Knitted Gifts, the Knitter's Handy Book series, Getting Started Knitting Socks, Simple Style*, and co-author of *Bag Style, Wrap Style, and Color Style* (all from Interweave Press). She lives in Boulder, Colorado.



knittingdaily WORKSHOP DVDs



Kathy Zimmerman, The Queen of Cables, unlocks the mysteries of cables and provides instruction she has developed from years of teaching—making the process of learning cables easy and fun in *Classic to Creative Knit Cables*.

Classic to Creative Knit Cables includes:

- An introduction to the rich variety of cable designs, types of cabled needles, and how to read and interpret a stitch chart.
- Step-by-step cabling techniques used in Zimmerman's "Deep Creek Scarf" and "Princess Cable Sweater" patterns—two updated classics with timeless stitches and included as free downloads in companion with this DVD.
- Special how-to on avoiding cable-knitting errors and how to fix problems such as incorrectly crossed cables or cables with gaps on the sides.

\$19.95
Available Now
interweavestore.com

Cable Rib Socks

design by Kathleen Cubley

Originally published on *Knitting Daily*, Winter 2009



These socks are a fun combo of tiny cables and 2/2 rib. The cables gradually form a point on the front of the socks and start from a point on the back of the socks. The pattern looks much more complex than it is, and you can use a solid sock yarn if you really want the cables to pop!

FINISHED SIZE: 5¼" circumference and 9" long from back of heel to tip of toe, unstretched.

YARN: CYCA #1 super fine. Schoppel-Wolle Zauberball Crazy (75% wool, 25% nylon; 459 yd [420 m]/100 g): #1699 blue/lavender/white, 1 ball. Yarn distributed by Skacel.

NEEDLES: Size 1 (2.25 mm): 40" circular (cir) (for Magic Loop) or set of 4 or 5 double-pointed (dpn). Adjust needle size if necessary to obtain the correct gauge.

NOTIONS: Markers (m); cable needle (cn); tapestry needle.

GAUGE: 48 sts and 44 rnds = 4" in patt, unstretched.

SKILL LEVEL: Intermediate.

SOCK

Toe

Using the Middle Eastern Cast-On method (see Glossary), CO 24 sts. Place marker (pm) and join for working in the rnd.

Next rnd: K12, pm, k12. **Next rnd:** *K1, M1, knit to 1 st before m, M1, k1; rep from * once more—4 sts inc'd. Work 1 rnd even. Rep last 2 rnds 9 more times—64 sts.

Foot

Work Row 1 of Foot chart to m, knit to end of rnd. Cont in patt until piece measures 6½" from CO, or 2½" less than desired total foot length, ending with Row 3 of chart.

Gusset

Rnd 1: Work in patt to m, k1, M1, knit to last st, M1, k1—2 sts inc'd.

Rnd 2: Work in patt to m, knit to end of rnd.

Rep Rnds 1 and 2 twelve more times—90 sts; 32 instep sts and 58 sole sts. Work in patt (Row 3 of chart) to m.

Knitting Instructions: **7 FREE Knitting Patterns for Knitting Accessories**

©Interweave | Not to be reprinted | All rights reserved | www.knittingdaily.com

Turn heel

NOTE: Heel is worked back and forth on last 58 sts of rnd.

Row 1: (RS) K31, ssk, k1, turn.

Row 2: (WS) Sl 1, p5, p2tog, p1, turn.

Row 3: Sl 1, k6, ssk, k1, turn.

Row 4: Sl 1, p7, p2tog, p1, turn.

Row 5: Sl 1, knit to 1 st before gap, ssk, k1, turn

Row 6: Sl 1, purl to 1 st before gap, p2tog, p1, turn.

Rep Rows 5 and 6 twenty more times—32 heel sts rem. Knit to end of row.

Leg

Resume working in the rnd. Work Rows 1-16 of Leg chart once, then rep Rows 17-19 of chart until leg measures 7", or 1½" less than desired finished length.

Cuff

P1, *k2, p2; rep from * to last 3 sts, k2, p1. Rep last rnd until cuff measures 1½". BO all sts using the Russian BO as foll: P1, k1, sl these 2 sts back to left needle, k2tog, *work 1 st in patt, sl 2 sts on right needle to left needle, k2tog; rep from * until all sts are BO.

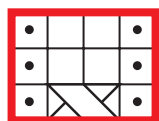
FINISHING

Weave in loose ends. Place the finished socks on sock blockers and lightly steam or mist with water from a spray bottle. Let dry. ❄

KATHLEEN CUBLEY is the editor of *Knitting Daily*. She actually does knit daily, working mostly on socks and sweaters. She also teaches knitting classes at her local yarn shop and leads a monthly sock club.



Foot



3

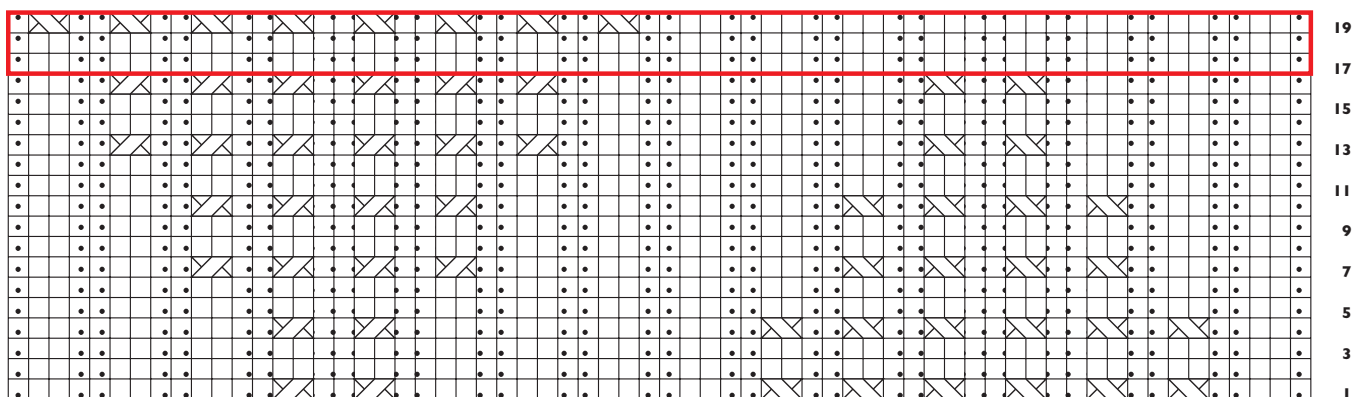
1

□ knit

• purl

□ pattern repeat

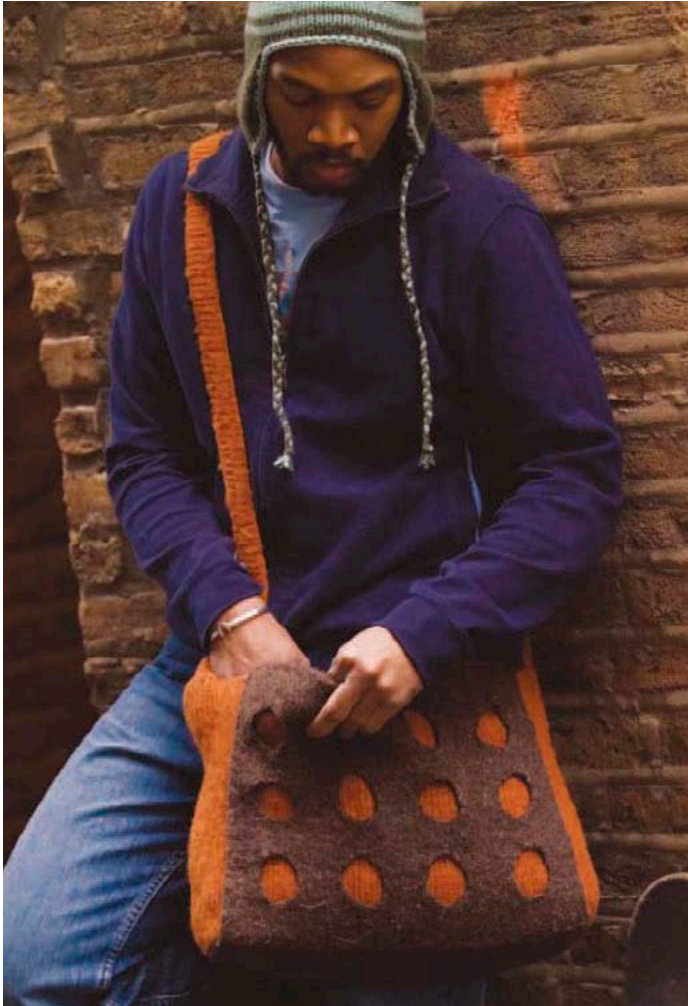
⋈ sl 1 st onto cn, hold in front, k1, k1 from cn

Leg

Boom Bag

design by Kate Kuckro

Originally published in *Knitscene*, Fall 2006



Ken Frantz

Modern architecture meets modern knitwear in this ingenious felted messenger bag. Cut-out circles punctuate a classic brown exterior to reveal an orange layer of felt underneath. Includes instructions on felting.

FINISHED SIZE: After felting: about 14½" wide, 11" tall, and 4" deep.

YARN: CYCA #4 medium. Classic Elite Skye Tweed, 100% wool; 110 yd (100 m)/50 g; #1285 MacAlister orange (A), 5 balls; #1291 mink (B), 5 balls.

NEEDLES: Size 7 (4.5 mm): 24" circular needle.

NOTIONS: Stitch marker; 6 x 15" plastic or heavy cardboard; yarn needle; pins; heavy duty snap.

GAUGE: 16 sts and 21 rows = 4" in St st before felting.

SKILL LEVEL: Intermediate.

CONSTRUCTION PLAN

Bag is knitted in pieces that are sewn together before felting. The holes are made by working eyelets in the knitting that form circle shapes. After felting, use sharp scissors to cut out the circles formed by eyelets.

BASE PANEL

With A, CO 66 sts. Work in St st (knitting RS rows, purling WS rows) for 28 rows; stop working after finishing a RS row.

SIDE PANELS

Next row: (WS) K66, pick up and knit 20 sts along side, turn corner, pick up and knit 66 sts along CO edge, turn corner, pick up and knit 20 sts along other side—172 sts total.

Next row: (RS) Knit.

Join for working in the rnd; place marker for beg of rnd.

Knitting Instructions: **7 FREE** Knitting Patterns for Knitting Accessories

©Interweave | Not to be reprinted | All rights reserved | www.knittingdaily.com

Rnd 1: P1, k64, p1, k20, p1, k64, p1, k20.
Rep last rnd 73 times. BO all sts.

STRAP

With A, CO 200 sts. Work in St st for 8 rows. Work 1 row in rev St st (purl on RS or knit on WS) to create ridge. Change to B and work in St st for 7 rows. BO all sts.

OVERLAY

Side Panel 1

With B, CO 66 sts.
Work in St st for 10 rows. Work 1 row in rev St st to create ridge.
Work in St st for 12 more rows.

Circles

Row 1: (RS) K6, *k2, k2tog, yo, k1, yo, ssk, k8; rep from * 3 times.

All WS rows: Purl.

Row 3: K6, *k1, k2tog, yo, k3, yo, ssk, k7; rep from * 3 times.

Row 5: K6, *k2tog, yo, k5, yo, ssk, k6; rep from * 3 times.

Row 7: K6, *k2, yo, ssk, k1, k2tog, yo, k8; rep from * 3 times.

Row 9: K6, *k3, yo, sl 1 k2tog pssso, yo, k9; rep from * 3 times.

Rows 11–20: Work in St st.

Rep Rows 1–20 two more times—83 rows from CO. Work 2 rows in St st.

Base Panel

Work 1 row in rev St st to create ridge. Work in St st for 28 rows.
Work 1 row in rev St st.

Side Panel 2

Work 12 rows in St st. Work circles as for Side Panel 1. Work 2 rows in St st. Work 1 row in rev St st. Work 10 rows in St st—200 rows from CO. BO all sts.

Tab

With RS facing, locate the first ridge from the top of Side Panel 1. Pick up and knit the center 10 sts in St st for 28 rows. BO all sts.

FINISHING

Weave in loose ends. Fold strap in half along the ridge and sew 2 long sides tog. Use the ridges and purled columns along sides of bag to line up overlay with bag. Pin the base and sides of the overlay in place; fold the ends of the overlay over the BO edge



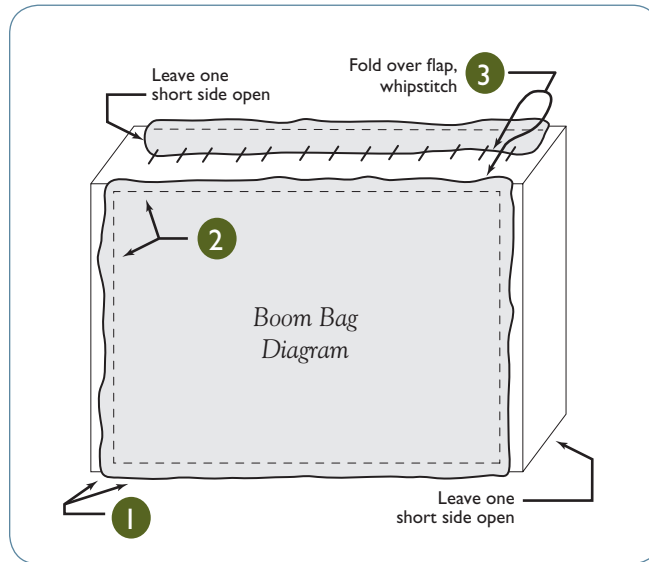
Ken Frantz

of the top of the bag and pin in place. Thread tapestry needle with B. Following diagram on page 10, assemble as follows: 1) Sew base of overlay to bottom of bag along the edge ridges—use small running sts, going through both layers of the fabric. Sew both long sides and one of the short sides, leaving the other short side open to insert the plastic after fulling. 2) Sew top and sides of overlay to bag on both sides with small running sts, working through both layers of fabric. 3) With WS facing, sew the folded part of overlay to the bag using whipstitch, leaving one short side on each flap open to insert plastic after felting.

Felting

Place strap inside small lingerie bag; place both strap and bag in washer set for a small load with the hottest water possible. Add about a teaspoon of liquid detergent. Let the washer agitate for about 10 minutes, then check. Tug the bag and strap into shape and return them to washer. Cont with agitation, checking regularly until sts are no longer visible. It may take several agitation cycles before the bag felts. Remove from hot water, gently squeeze out water, and place bag in a sink filled with cold water. Swish around to rinse. Gently press water from bag, then roll in a towel to remove excess water. Tug the bag and handle into shape as needed. Allow bag to dry flat. When bag is dry, use a sharp scissors to cut out the circles along the eyelet holes. Be careful to cut only through the overlay layer. Even out the circles as needed. Cut the plastic or cardboard into two 1 x 15" strips and one 4 x 15" strip. Measure the width of the felted bag; trim all strips to the correct length. Round the corners of the strips. Insert each 1"-wide strip into the sections of overlay on the top inside edges of the bag. Trim the width of the 4"-wide strip as needed, then insert into the base of the bag. Use whipstitch to sew the strip pockets closed. Sew snap to tab and inside of bag. Center strap along top side edges of bag. Sew strap securely to bag. ❄

More of KATE KUCKRO'S knitting designs can be found at www.simplycrafted.com. She lives in San Francisco.



RISK-FREE TRIAL OFFER

Discover knitwear designs that will capture your imagination.

You don't have to be a designer or a knitting pro to make beautiful knitted garments and accessories, and you don't have to hunt all over for inspiring designs.

From cover to cover, *Interweave Knits* magazine gives you great projects, from the beginner to the advanced. Every issue is packed full of captivating smart designs, step-by-step instructions, easy-to-understand illustrations, plus well-written, lively articles sure to inspire.

Take advantage of this special risk-free offer today!

interweave.com/go/kdiwk

Snowball Hat

design by Katie Himmelberg

Originally published in *Interweave Knits*, Fall 2007



Chris Hartlove

The designer uses a cable and a twisted stitch to create a richly textured fabric for this hat. A giant pom-pom keeps it fun.

FINISHED SIZE: 22" head circumference.

YARN: CYCA #4 medium. Valley Yarns Florence (50% merino, 35% acrylic, 15% kid mohair; 109 yd [100 m]/50 g): #27488 white, 3 balls. Yarn distributed by WEBS.

NEEDLES: Sizes 9 (5.5 mm) and 11 (8 mm): set of 5 double-pointed needles (dpn). Adjust needle size if necessary to obtain the correct gauge.

NOTIONS: Cable needle (cn); tapestry needle; 3½" pom-pom maker (optional).

GAUGE: 16 sts and 20 rows = 4" in 2×2 rib with yarn doubled.

SKILL LEVEL: Intermediate.

STITCH GUIDE:

2×2 Rib: (multiple of 4 sts)

Rnd 1: *K2, p2; rep from * to end.

Rep Rnd 1 for patt.

Right Twist (RT): K2tog, do not drop sts off left needle; knit first st again, drop both sts from left needle tog.

3/3 LC: Sl 3 sts to cable needle (cn) and hold in front, k3, k3 from cn.

Cable and Twist Pattern: (multiple of 16 sts; see chart)

Rnd 1: *P1, k2, p2, k6, p2, k2, p1; rep from * to end.

Rnd 2: *P1, RT (see Stitch Guide), p2, 3/3 LC (see Stitch Guide), p2, RT, p1; rep from * to end.

Rnds 3 and 4: Rep Rnd 1.

Rep Rnds 1–4 for patt.

HAT

With yarn doubled and smaller dpn, CO 80 sts. Distribute sts over 4 dpn. Place marker (pm) and join for working in the rnd. Work in 2×2 rib (see Stitch Guide) for 8 rnds. Change to larger dpn and beg working cable and twist patt (see Stitch Guide and chart). Work Rnds 1–4 of patt a total of 5 times. Shape crown:

Dec Rnd 1: *P1, k2tog, p2, k6, p2, k2tog, p1; rep from * around—70 sts rem.

Next rnd: Cont in patt, working sts as they appear (knit the knit sts and purl the purl sts), working cable crosses as established on Rnd 2.

Dec Rnd 2: P1, *k1, p2tog, k6, p2tog, k1, p2tog; rep from * to last st, p2tog (the first and last sts of the rnd)—55 sts rem.

Work 1 rnd even in patt.

Dec Rnd 3: *Ssk, k6, k2tog, p1; rep from * around.



Chris Hartlove

Knit 1 rnd. Break yarn, leaving a 10" tail. Thread tail on tapestry needle and thread through rem sts. Pull tightly and weave in tail on WS.

FINISHING

Pom-pom: Make a 3½" pom-pom by using a pom-pom maker or foll the instructions in the Glossary. Secure pom-pom to top of hat. Weave in ends. ❄️

KATIE HIMMELBERG appreciates the strengths of crochet and knitting and enjoys projects that celebrate both. She mixes knit and crochet from her home in Loveland, Colorado.



k on RS



p on RS



pattern repeat

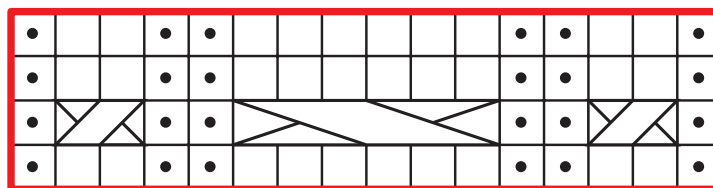


RT: (see Stitch Guide)



3/3 LC: (see Stitch Guide)

Cable and Twist



Crumpet Beret

design by Maura Kirk

Originally published by Fairmount Fibers



© Fairmount Fibers

This jaunty lace beret is knit using just one ball of Manos del Uruguay's luxurious silk blend.

A dimensional 5-point leaf pattern pops out on a reverse stockinette ground creating an eye-catching motif. Sized to fit a Women's medium (large) head and knit from the center out, it is easily customizable to achieve a perfect fit.

FINISHED SIZE: 17" (20") Circumference (with band relaxed) 9" (10") Diameter.

YARN: Manos Silk Blend (30% silk/70% wool; 150 yds/50 gms) 1 (2) sk Citric 3068.

NEEDLES: One set five double pointed needles, size US5 (3.75mm). One 16" circular needle size US4 (3.5mm)

NOTIONS: 5 stitch markers, Tapestry needle, 9" diameter plate (for blocking)

GAUGE: 26 sts and 32 rows = 4" in StSt on Size US5 (3.75mm). Change needle size if necessary to obtain gauge

*Be sure to check your gauge! The size medium uses a full skein of yarn.

SKILL LEVEL: Intermediate.

HAT

1. Using dpn, cast on 5 sts and join in the round, being careful not to twist your stitches.
2. * kfb, pm; rep from * 5 times. (10 sts)

Work rnds 1-32 of the chart. (170 sts)

Rnd 33: *k1, yo, p2tog, p31; rep from * 5 times. (170 sts)

Rnd34: *k1, p31, p2tog tbl, yo; rep from * 5 times. (170 sts)

Repeat rnds 33 and 34 5 (10) times more, or as desired for length. (170 sts)

Next round:

Size Medium: p2tog around (85 sts).

Size Large: p1, *p2tog, p1; rep from * to last st, p1. (114sts)

Next round: k2tog 1 (0) times, *p1, k1; work from * to end.
Work 11 more rounds in k1, p1 rib.
Bind off loosely in pattern.

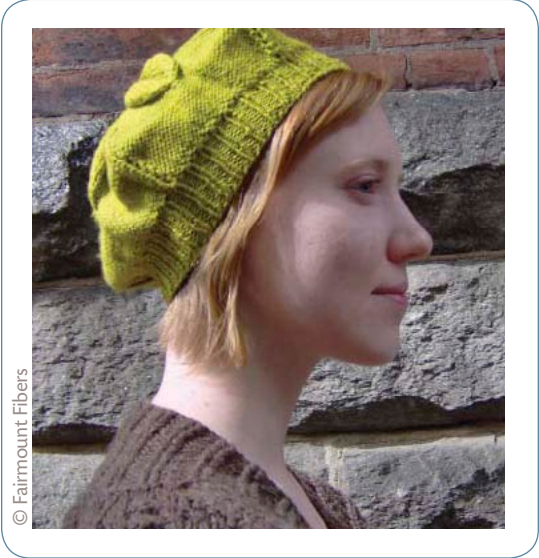
FINISHING

Weave in ends.

Soak beret in woolwash and lukewarm water for 10 min.
Stretch over a 9" diameter plate and allow to dry.

NOTES ON THE CHART:

The markers each show the division between one petal and the next. The chart represents the stitches of one segment; work each chart row 5 times to complete the round. ❄



© Fairmount Fibers



knittingdaily tv

Make Time for Yarn Every Day™

Knitting Daily TV IS AVAILABLE ON DVD!

Watch your favorite episodes at any time. Invite Eunny Jang, Kristin Omdahl, and Shay Pendray into your home for one-on-one lessons in knitting, crochet, and even stitching.

Series 400
is available on DVD
January 2010!

Visit KnittingDailyTV.com
and purchase your
personal DVD of
Knitting Daily TV Today!



ABBREVIATIONS:

k = knit

p = purl

st(s) = stitch(es)

kfb = knit into the front & back loop of the same st (one st increased)

pm = place marker

yo = yarn over

p2tog = purl two together (one st decreased)

p2tog tbl = purl two together through back loops (one st decreased)

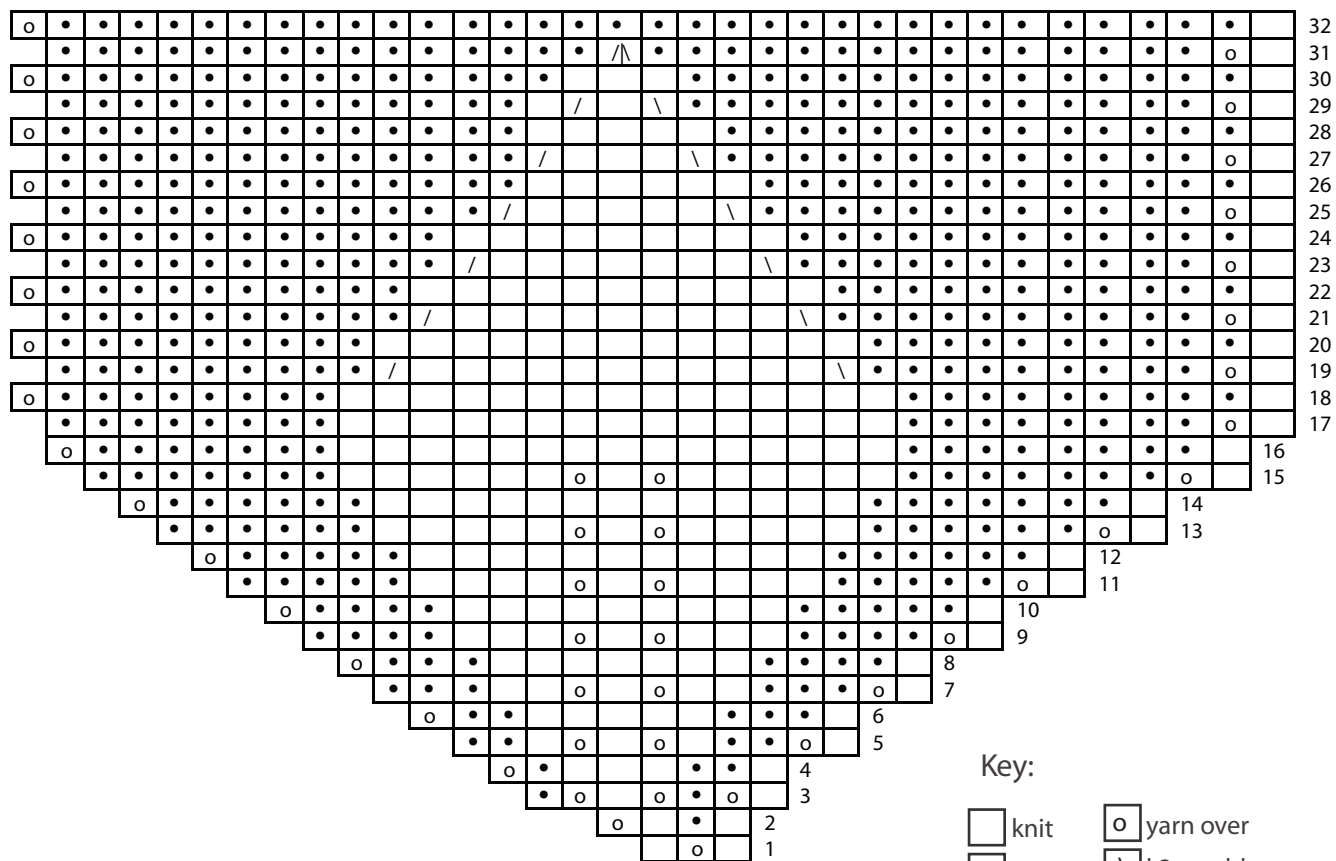
k2tog tbl = knit two together through back loops (one st decreased)

sl1 k2tog pssso = Slip one st purlwise, knit two

sts together & pass the slipped st over (two sts decreased)

MAURA KIRK has a BS in Textile Engineering and Technology and she's working on an MS program in Textile Engineering. Maura works at a yarn shop on the weekends and she knits to unwind and designs a bit when she's inspired.

Chart



Key:

	knit		yarn over
	purl		k2tog tbl
	k2tog		sl1, k2tog, pssso

Spectrum Scarf

design by Eunny Jang

Originally published Summer 2008



AnnSwanson

Color blending with multiple strands of ultra fine—and ultra soft—alpaca yarn shades this lacy scarf achieved with a simple one-row lace repeat.

FINISHED SIZE: 8" wide and 64" long, after blocking.

YARN: CYCA #1 super fine. Alpaca with a Twist Fino (70% baby alpaca, 30% silk; 875 yd [800 m]/100 g): #0093 tamarind (A), #2001 royal velvet (B), and #0201 champagne (C), 1 skein each.

NEEDLES: Size 7 (4.5 mm). Adjust needle size if necessary to obtain the correct gauge.

NOTIONS: Markers (m); tapestry needle.

GAUGE: 12 sts and 16 rows = 4" in lace patt, after blocking.

SKILL LEVEL: Easy

STITCH GUIDE

One-Row Lace: *P1, yo, k2tog; rep from * to end.
Rep this row for patt.

SCARF

With 4 strands of A held tog, use the knitted method (see Glossary) to CO 27 sts. Knit 6 rows. **Next row:** K3, work in one-row lace (see Stitch Guide) to last 3 sts, k3. Work 13 more rows in lace patt, keeping first and last 3 sts in garter st. Break off one strand of A and join one strand of B (3 strands A, 1 strand B). Cont in patt and swap one strand every 28th row as foll:

2 strands A and 2 strands B

1 strand A and 3 strands B

4 strands B

3 strands B and 1 strand C



2 strands B and 2 strands C

1 strand B and 3 strands C

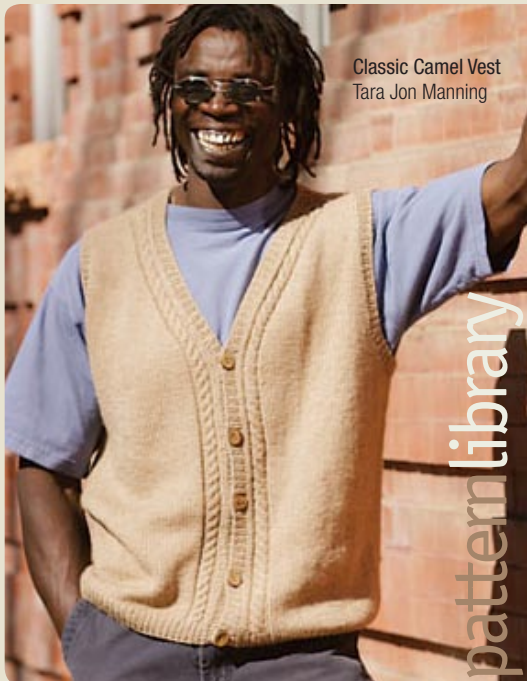
4 strands C

Cont with C, knit 6 rows.

BO all sts loosely. Weave in ends but do not trim.

Wet-block scarf to desired dimensions; trim ends when completely dry. ❄

EUNNY JANG is the editor of *Interweave Knits*.



knits and
more!

Free e-newsletter. Free patterns. Daily blog. Galleries.
Technical glossary. Resources. New product announcements.
Event updates. And more!

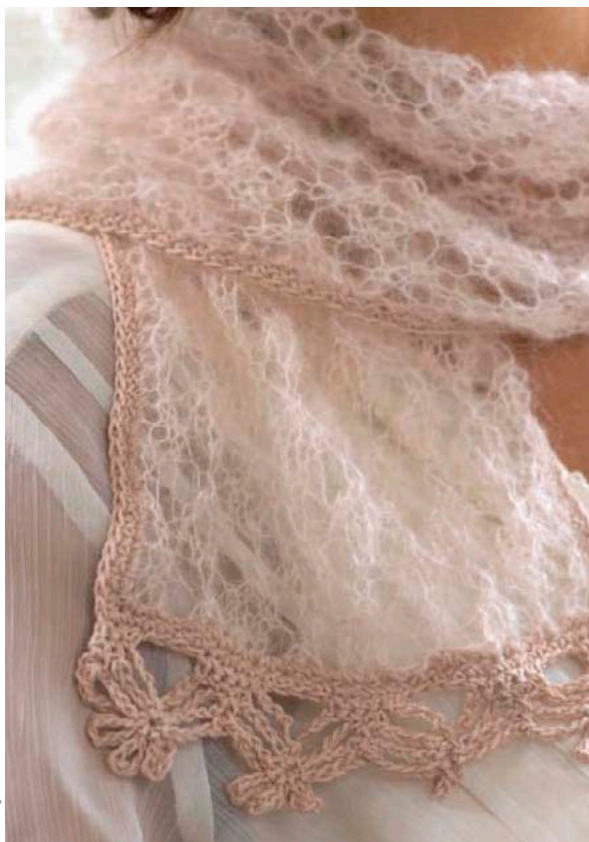


An online community that shares
your passion for knitting.

Lace Scarf

design by Lene Holme Samsøe

Originally published in *Feminine Knits* (Interweave, 2009)
and *Interweave Knits*, Summer 2009



Kathryn Martin

This elegant little scarf is a study in contrasts: A knitted panel in soft, plush mohair is surrounded by a crocheted lace edging in a smooth, light linen blend. The resulting sweet confection is the perfect gift—if you can bear to part with it.

FINISHED SIZE: About 7" (18 cm) wide and 34" (88 cm) long.

YARN: DK weight (Light #3). Shown here: Coats Fonty Kidopale (70% kid mohair, 30% polyamide; 275 yd [250 m]/25 g): powder 300, 1 ball (mohair), and Coats HP Løve Lima (38% linen, 31% cotton; 31% viscose; 223 yd [104 m]/50 g): powder 211, 1 ball (linen).

NEEDLES: U.S. size 6 (4 mm). U.S. size D (3 mm) crochet hook. Adjust needle size if necessary to obtain the correct gauge.

NOTIONS: Stitch holder or spare cir needle; tapestry needle.

GAUGE: 18 sts and 25 rows = 4" (10 cm) in lace pattern with mohair.

SKILL LEVEL: Intermediate.

SCARF

With mohair, CO 27 sts loosely. Purl 1 row. Work Lace chart until scarf measures 31½" (80 cm) or desired length, ending as indicated. BO loosely. Weave in ends.

EDGINGS

With crochet hook and linen and beg on BO row, work 1 row sc around the entire scarf, working about 20 sc for every 4" (10 cm) along the long sides and 34 sc along CO and BO edges. (See Glossary for crochet instructions.) Do not cut yarn; continue with lace edging along the first short end.

Row 1: Work 1 row of sc. Ch 1, turn.

Row 2: 1 sc in each of the first 3 sc, *ch 9, skip 3 sc, 1 sc in

LENE HOLME SAMSØE is a Danish Knitting designer. In addition to five other books of knitting and crochet designs for children and adults, she has designed patterns for the Sandnes Garn company and Coats in Denmark.



bookEXCERPT

Find more
great designs in
Feminine Knits
published by
Interweave Press
(2009)

-  Knit on RS; purl on WS
 Purl on RS; knit on WS
 Yarnover
 K2tog
 Ssk
 Sssk
 Pattern repeat

Lace

A 10x10 grid with a red rectangle highlighting a 4x4 subgrid. The grid contains symbols: dots in the first and last columns; circles with arrows (↗, ↘, ↙, ↕) in the second, third, eighth, and ninth columns; and slashes (/) in the fourth, fifth, sixth, and seventh columns. The red rectangle covers rows 3-6 and columns 3-6.

Glossary

Raised (M1) Increases

Left Slant (M1L) and Standard M1

With left needle tip, lift strand between needles from front to back (Figure 1). Knit lifted loop through the back (Figure 2).

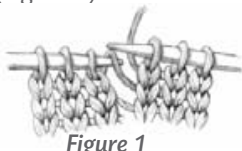


Figure 1

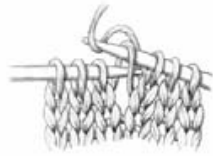


Figure 2

Right Slant (M1R)

With left needle tip, lift strand between needles from back to front (Figure 1). Knit lifted loop through the front (Figure 2).



Figure 1



Figure 2

Knitted Cast-On

Place slipknot on left needle if there are no established stitches. *With right needle, knit into first stitch (or slipknot) on left needle (Figure 1) and place new stitch onto left needle (Figure 2). Repeat from *, always knitting into last stitch made.



Figure 1



Figure 2

Crochet Chain (ch)

Make a slipknot on hook. Yarn over hook and draw it through loop of slipknot. Repeat, drawing yarn through the last loop formed.



Single Crochet (sc)

Insert hook into a stitch, yarn over hook and draw a loop through stitch, yarn over hook (Figure 1) and draw it through both loops on hook (Figure 2).

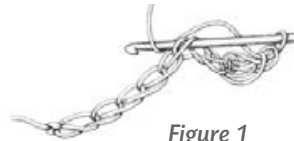


Figure 1



Figure 2

Slip Stitch Crochet (sl st)

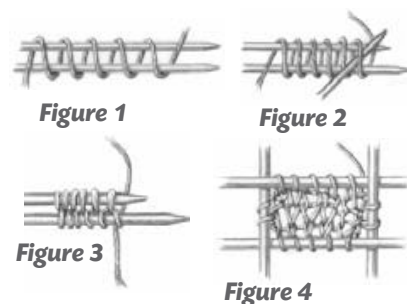
Insert hook into stitch, yarn over hook and draw loop through stitch and loop on hook.



Glossary

Middle East–Wrap Cast-On

Snugly wrap the working yarn counterclockwise around two needles. Bring the yarn forward between needles, back to front (Figure 1). Knit across stitches on upper needle (Figure 2). Rotate the work and knit across the same number of stitches on the other needle (Figure 3). On the third row, pick up two stitches along each side (Figure 4).



Join for working in the rnd

To work in the round, you need to use a circular needle or double-pointed needles. After all stitches have been cast-on, hold needle tips together, creating a circle. Make sure your stitches do not twist around the needle(s); you should be able to see the tops of the stitches all the way around and the cast-on should not spiral over the needle(s). Pick up the yarn from the end of the cast-on (now on your right-hand side) and begin working stitches from the left needle tip. There will be a slight gap at this join, but after a few rows of knitting, the gap will close up. In most patterns, the join is the beginning and end of rounds.

Whipstitch

With right side of work facing and working 1 stitch from the edge, bring threaded yarn needle out from back to front around edge of knitted piece. Wrap the edge, and insert the needle from the back to the front again.

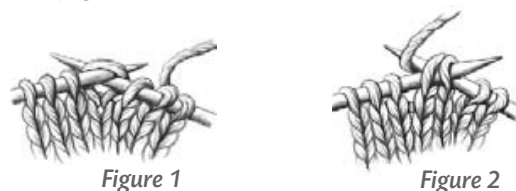
Backward Loop Cast-On

*Loop working yarn and place it on needle backward so that it doesn't unwind. Repeat from *.



Ssk Decrease

Slip two stitches knitwise one at a time (Figure 1). Insert point of left needle into front of two slipped stitches and knit them together through back loops with right needle (Figure 2).



K2tog Decrease

Knit 2 stitches together as if they are a single stitch—2 stitches reduced to 1.

sl1 k1 pssso decrease

Slip 1 stitch knitwise, knit the next stitch, then use the point of the left needle to pass the slipped stitch over the knit stitch and off the right needle—2 stitches reduced to 1.